

SAVE THE DATE!

BIG BASH

Saturday,
January 31, 2026
7p.m.
Sheridan Community
Center

*Our annual mid-winter celebration and fundraiser
Come and enjoy!*

ANNUAL GOLF OUTING FUNDRAISER

July 24, 2026

Watch Facebook for more information to come!



CENTRAL MONTCALM
COMMUNITY FOUNDATION
P.O. Box 128, Stanton, MI 48888
cmcommunityfoundation.org

CENTRAL MONTCALM COMMUNITY FOUNDATION RESTRICTED FUNDS

- *Community Endowment* – directing grants to areas of need in the community
- *Chemical Bank Fund* – to support the mission of the CMCF by providing an additional source of funding to meet community needs
- *Crooks Farm Endowment* – will provide funds each year for grants
- *Discretionary Fund* – a quick response fund that can be used to meet unanticipated community needs
- *Education Endowment* – supports programs that meet the needs of the community's youth
- *Isabella Bank Scholarship* - for a CM graduating senior attending a four year Michigan college or community college that has demonstrated community involvement through service/volunteerism and has a 3.0 or greater GPA.
- *Dr. Victor Beal Jr. Scholarship* – for graduating seniors attending MSU
- *Ronald R. Burkholder Educational Scholarship* – for graduating seniors
- *Gurecki Family Educational Scholarship* – for graduating seniors
- *William McCarthy Scholarship* – for students attending Criminal Justice or Law Enforcement programs
- *Outreach Endowment* - long term funding mechanism for the Discretionary Fund
- *Penny's Way, Food & Clothing Fund* – financial help to organizations that distribute food & clothing in Montcalm County
- *Kevin Seymour Educational Scholarship* – for graduating seniors
- *Bill Thwaites Educational Scholarship* – for graduating seniors
- *Jackie & Norbert Vander Steen Scholarship* – for graduating seniors attending WMU
- *Doug and Nancy Chapin Scholarship* – for a graduating Central Montcalm senior
- *Youth and Senior Endowment* – provides funding for health, wellness, and enrichment programs throughout our community
- *Administrative Endowment* – funds the administrative functions of the foundation so it can continue on its mission to serve the community
- *C. Homer and Charlotte L. Miel Endowment Fund* – for the purpose of providing discretionary educational grants to teachers or administrators of Central Montcalm Public Schools
- *Mall Family Endowment* – will provide funds each year for grants
- *Korson Endowment* – annual scholarship for a CMHS student attending CMU's School of Business
- *MAISD Endowment* – for students who have an IEP and attend school in Montcalm County - will provide scholarships to students as they matriculate to post secondary and technical training.

- *Petersen Family Endowment* – for a graduating Central Montcalm student who will be attending Grand Valley State University
- *Harold & Dorothy Springsteen Endowment* – for a graduating Central Montcalm student who will be attending a 4 year Michigan college or Montcalm Community College
- *Erik Thomas Endowment* – for a graduating Central Montcalm student who plans to attend Ferris State University in the golf management program
- *Brady Sexton Endowment* – to provide funding for Central Montcalm youth athletics
- *Ernest (Bud) and Nancy Rogers Family Endowment* – for a graduating Central Montcalm senior who plans to attend a 4 year College/University, Community College or Trade School in Michigan
- *Lloyd and Judy Hansen/Hansen Family Endowment* – to provide a scholarship for a student attending Michigan State University
- *Steve Strait Educational Fund* – to provide funding for grants to improve teaching in order to impact learning
- *Christian Outreach Endowment* – provide funds for community programs sponsored by area ministers
- *Jan and Jack Pearl Endowment* – provide a scholarship to a graduating Central Montcalm student
- *Thomas Wittkopp Endowment* – provide a scholarship to a Central Montcalm student
- *William J. Seiter Jr. PHD Endowment Fund* – a scholarship for a graduating Montcalm County graduating senior with acceptance to a Michigan university, tech or trade school
- *Diane & Franz Mogdis Endowment* – a grant opportunity for Central Montcalm Elementary teachers who have classroom needs
- *Haylie Schneider Scholarship Fund* – a scholarship for a Montcalm County student pursuing higher education in a special education field
- *Albert & Genevieve Hansen Endowment* - for a graduating senior attending CMU in Business Administration or Special Education.
- *Jeff Smith Endowment* - provide funds for Veterans Park field maintenance
- * *Field of Interest* – donors may be able to designate a specific area of interest
- * *Legacy* – setting up a fund in your name or in the name of a loved one or family as a living memorial

*Contact the CMCF as there is a minimum contribution required.



2025 ANNUAL REPORT

Board of Directors

Ginger Gurecki
President

Bill Simpson Jr.
Vice President

Doug Seymour
Treasurer

Mary Miel
Secretary

Kristy Thwaites
Director

Sue Kearney
Director

Amy Meinhardt
Director

Jeni Williams
Director

Deb Thomsen
Director

Heather Jacoby
Director

Curtis Holt
Director

Tiffany Kohn
Director

Jessica Korson
Director

Katie Flynn
Director

Mandy McLaughlin
Director

Rebranding

In 1993 several members of our community including people like Tom Mall, Wayne Korson, Chuck Miel, Harold Springsteen, and Gene Bliss met to form the Central Montcalm School Foundation. They had a vision of creating a legacy of giving in our community that would produce a lasting positive impact for residents of our school community. Several years later most of these same people determined that they wanted to create a larger lasting impact by renaming the Central Montcalm School Foundation the Central Montcalm Community Foundation (CMCF).

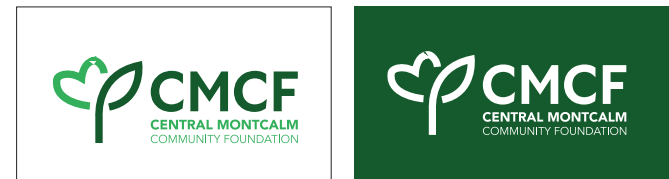
The stated purpose is to:

1. To promote, encourage, aid and supplement existing funds for community-oriented projects in the Central Montcalm area.
2. To accept and hold such monies or other properties both real and personal, in trust or otherwise, as may be acquired by will, gift or otherwise.
3. To distribute and disburse the income from the same for community purpose.
4. To engage in any lawful activities to support the purposes of the Foundation.

Today, 32 years after the inception of the original Foundation, we have awarded 100's of thousands in Community Grants, and Scholarships and an endowment that has grown to over \$2,000,000 through the generous support of many community members. We are embarking on a new branding campaign and working with our consultant to develop a new web site.

You may recognize us with the following logo. This logo has served us well for many years; however, we had a desire to create a new bold design that is easily recognizable as the logo of the Community Foundation. Therefore, please look for this new logo that will serve to identify

Central Montcalm Community Foundation events and activities. This logo will be used with either a green or white background.



We are also working to launch a new website. Same address, but updated information that will make it easy for community members to connect with CMCF for grant applications, scholarship applications, following the activities and events of the Foundation or making a donation.

We are very appreciative of your support over this last year, and we are especially thankful to those community members who took the time to create this foundation and continue to support it today. It is because of these great people that we can continue to support the legacy they created by making a difference in the Central Montcalm Community today and for years to come.



This year CMCF was honored to present Grandma's Thimble Shop in Stanton with our first Mall Family Endowment. This mission of this endowment is to help beautify the exterior of a business/building within a downtown business district in the Central Montcalm School District.

Pat Herbison, owner of Grandma's Thimble Shop was reimbursed \$5000.00 toward the new windows that she had installed on the front of her business. Congratulations! They look wonderful!

Picture: Board Members, Kris Thwaites, Heather Jacoby, Amy Meinhardt, Ginger Gurecki (June LeVand) and shop owner Pat Herbison

Letter from the President



Dear Friends and Neighbors,

As we reflect on the past year, I am filled with gratitude for the generosity, resilience, and shared purpose that define our community. The work of the Central Montcalm Community Foundation is only possible because of you—our donors, nonprofit partners, volunteers, and local leaders who believe in the power of working together to create lasting change.

This year, we strengthened our commitment to advancing opportunity, supporting local nonprofits, and responding to emerging community needs. Through the partnership of hundreds of donors, we were able to invest in programs that provide essential services, expand educational pathways, support families, and build a more vibrant and inclusive future for all who call our region home.

Our grantmaking, community initiatives, and leadership work are driven by one simple belief: **when we invest in our community, we invest in each other.** Whether supporting grassroots organizations doing vital on-the-ground work, helping local students pursue higher education through scholarships, or collaborating on regional solutions, your support fuels progress.

We also continued to grow our endowment, ensuring that the foundation remains a permanent source of strength for generations to come. You can help us grow our endowed funds by considering us for end of the year giving. This long-term stability enables us to meet immediate needs today while planning intentionally for tomorrow.

As we move into the year ahead, we remain focused on listening, learning, and building partnerships that reflect the diverse voices and aspirations of our community. Together, we can expand opportunity, deepen impact, and help ensure that everyone has the chance to thrive.

Thank you for your trust, your engagement, and your belief in what we can accomplish together. It is an honor to serve this community, and I look forward to all that we will achieve in the coming year.

With appreciation,

Ginger Gurecki
President Central Montcalm Community Foundation

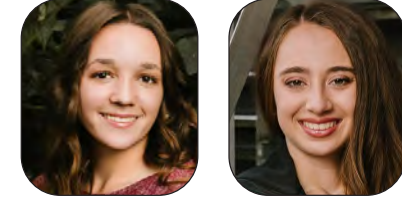


The CMCF hosts two fund-raising events per year: The Big BASH in January and the Golf Outing in July. These fund-raisers are very important to our success in helping to support our community. We are grateful to all those who Sponsor, donate and participate in these events. Hopefully while having a little fun.

2025 Graduates Honored with Scholarships

The Central Montcalm Community Foundation Board of Directors is pleased to recognize the following spring 2025 graduates with scholarships.

- | | |
|-------------------------|--|
| MaKenzie Bailey | Jan & Jack Pearl Endowment |
| Hunter Briskey | Harold & Dorothy Springsteen Endowment |
| Isabella Brussel | Dr. Victor Beal Jr. Scholarship |
| Ashley Choponis | Gurecki Educational Scholarship |
| | Bill Thwaites Educational Scholarship |
| Alexis Curry | CMCF Education Endowment |
| Celina Eldridge | Kevin Seymour Educational Scholarship |
| | Bill Thwaites Educational Scholarship |
| Chloe Fetty | Ronald R. Burkholder Educational Scholarship |
| Kyah Hoffman | Korson Endowment |
| Landon Hopkins | Thomas Wittkopp Endowment |
| | William J. Seiter Jr. PHD Endowment |
| Alex Jacoby | Jackie Vander Steen Scholarship |
| Hannah Lund | Jackie Vander Steen Scholarship |
| Sydnee Moreland | Doug & Nancy Chapin Scholarship |
| | Isabella Bank Scholarship |
| | Albert & Genevieve Hansen Endowment |
| | Haylie Schneider Scholarship |
| Caleb Rose | Parr (CORE) Endowment |
| Ben Yaw | Bill Thwaites Educational Scholarship |



Congrats!

TO ALL OF THE 2025 GRANT RECIPIENTS

CM Youth Football
Football fees

Montcalm Co Great Start
Dolly Parton Library

White Pine Library
Story Walk Garden & Elementary field trips

City of Stanton Police
Safety Pup Child Education

We Care about Kids
Family Fun Day

Hope's Pantry
Community Pantry

CM Swarm Store
School store supplies

CM Bands
Tarp for gym floor

EightCAP
Senior food bags

Greenville Community Church
Night to Shine

MAISD Career Center
2nd grade birdhouses

CM Summer League
Youth softball & baseball

Grandma's Thimble Shop
Window replacement



The 2025 Homecoming Tailgate Crew prepared and gave away 300 hot dog meals before the CM Football game.



We wish much success to all of these students as they continue their education!

